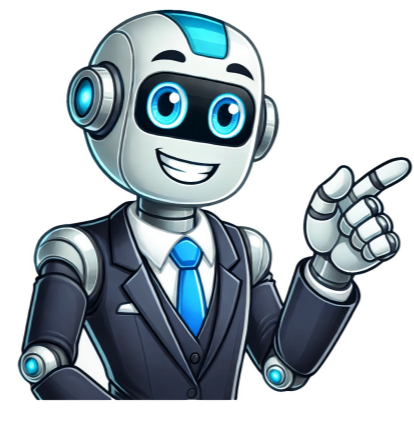


Continue



What does a stomach ct scan look for

Before having an abdominal CT scan, the hospital where it will be done will inform you of any preparation that is needed beforehand.For instance, you may be asked to speak with a doctor or nurse if you are feeling anxious about the procedure or have a fear of enclosed spaces. They might be able to give you medication to help you relax during the scan.Also, you can ask if you can bring someone to accompany you during the CT scan. To prepare for an abdominal CT scan, you may be asked to remove any metal objects or adjust your positioning with pillows or straps. During the procedure, a technologist will administer contrast dye if necessary and guide the CT table to focus on specific areas. The entire process typically takes under 10 minutes. When contrast is used in abdominal CT scans, it helps distinguish between organs and tumors or lesions. This dye is also useful for detecting injuries to blood vessels. Certain conditions that may require contrast include trauma, bowel inflammation, infections, intestinal blockages, and tumor identification. Healthcare providers use different types of contrast in abdominal CT scans, such as intravenous (IV) contrast for identifying solid organs and blood vessels, or oral contrast to evaluate the intestines. Abdominal CT scans can be performed without contrast dye for conditions like kidney stones or suspected spinal trauma. A radiologist oversees the process, reviews the images, and interprets the results. After the scan, they will send a report to your healthcare provider to develop a treatment plan. Although abdominal CT scans use ionizing radiation, which is associated with increased cancer risk, technologists take measures to minimize exposure. According to the American College of Radiology (ACR), there are no absolute contraindications for abdominal CT scans. CT scans for the abdomen or pelvis are performed by healthcare providers who weigh their risks and benefits before ordering them. For individuals with chronic kidney disease, pregnancy, or a known contrast dye allergy, extra precautions are taken to minimize risk. Contrast dye is administered orally, rectally, or intravenously and can cause allergic reactions, especially in those with multiple drug allergies, asthma, or previous anaphylactic reactions to medication. Before recommending contrast dye for a CT scan, providers check kidney function by drawing blood and analyzing it. If kidney function is not optimal, alternative options are considered. A shellfish allergy does not increase the risk of a contrast dye reaction, despite the iodine in shellfish being different from that in contrast dye. Abdominal CT scans diagnose infections, inflammation, injury, or cancer in the abdomen or pelvis and typically last about ten minutes. Providers use contrast dye depending on the rationale for ordering an abdominal CT scan. The results are reviewed by a radiologist and sent to primary care providers, who collaborate with patients to develop treatment plans. Abdominal CT scans diagnose various diseases and conditions, including cancer, blood clots, kidney or bladder stones, ulcerative colitis, and certain infections. They are also used after traumatic injuries to visualize abdominal organs with or without contrast dye. The appropriate imaging choice for abdominal issues should be determined through a thorough physical examination and medical history. Conditions like cholecystitis, ectopic pregnancy, intrauterine pregnancy, ovarian torsion, or other non-abdominal conditions make CT scans unnecessary. Once the provider has assessed your condition, they will decide if an abdominal CT scan is required. Before the exam, you'll receive specific instructions to follow, such as avoiding food and drink, wearing loose clothing, and removing jewelry. The technologist will guide you through the process, which typically takes less than 10 minutes. Abdominal CT scans may use contrast to improve image quality, especially for conditions like trauma, bowel inflammation, or cancer detection. Providers choose from various types of contrast, including IV, oral, rectal, and intrathecal, depending on the specific evaluation needs. Abdominal CT scans are used to diagnose various conditions such as kidney stones, suspected spinal trauma, and abscesses, without the need for contrast dye in some cases. These complex imaging studies require supervision from a trained radiologist, who reviews and interprets the images, and sends an official report to your healthcare provider. CT scans use ionizing radiation, which carries a small increased cancer risk. However, the risk is relatively low compared to plain film X-ray studies. To minimize radiation exposure, CT scan technologists take precautions. Before undergoing an abdominal CT scan, healthcare providers assess risks and benefits and consider alternative options for individuals with high-risk conditions such as kidney disease or allergies. They also ask about shellfish allergies, as iodine in shellfish may react with the contrast dye used during the scan. Abdominal CT scans are diagnostic tools that help identify infections, inflammation, injury, or cancer in the abdomen or pelvis. The scan typically lasts around 10 minutes and is followed by a review of results with your primary care provider to develop a collaborative treatment plan. Given article text here your healthcare team detects it early. A CT scan is often part of the diagnosis. stomach cancer, or gastric cancer, happens when abnormal cells develop in your stomach, grow out of control, and form tumors. stomach cancer is a life threatening condition with a high chance of fatality, especially if the diagnosis comes during its late stages. The American Cancer Society (ACS) estimates that about 11,130 people will die of this condition in 2023. A biopsy is the primary way to tell if you have stomach cancer. But tests like a CT scan help medical professionals make a proper diagnosis. In combination with a biopsy, a CT scan can help confirm the presence of stomach cancer, its location, and the extent of its spread. Let's discuss the role of CT scans in stomach cancer diagnoses, what happens during the procedure, other diagnostic tests for stomach cancer, and when to get medical attention. Computed tomography (CT scan) uses X-rays to create detailed images of cross-sections of soft tissues in your body. Healthcare professionals can use a CT scan to find suspicious areas of the stomach that might have cancer cells. According to a 2018 study, CT imaging is the most common way of diagnosing and staging gastric cancer. CT scans can help confirm the location of stomach cancer, find out where it has spread, guide a biopsy needle to the specific area, and help determine the best treatment option for you. While a CT scan is helpful for identifying stomach cancer, there can be errors in the findings. Its accuracy in diagnosing stomach cancer will depend on factors like the cancer stage and the type of contrast used. A 2020 study showed that CT scans are more likely to miss findings when cancer occurs in places like the mesentery (which attaches your intestine to the abdominal wall) and the peritoneum (which covers your abdominal organs, blood vessels, and liver). Other tests to detect and diagnose stomach cancer include: Blood tests: This includes measuring the number of white blood cells, red blood cells, platelets, and the amount of certain chemicals in the body. Upper gastrointestinal endoscopy: Doctors commonly use endoscopy to diagnose stomach cancer. They use an instrument called an endoscope, which has a light and a lens. This lets them look into your stomach and check for abnormalities like ulcers, tumors, and bleeding. Tumor marker tests: Tumor markers can be present in your tissues, blood, or other body fluids. When certain tumor markers like HER2 are present in abnormal amounts, it may mean you have stomach cancer. Biopsy: Biopsy is the definitive test for diagnosing stomach cancer. It involves testing tissue samples from your body in a lab to determine if cancer cells are present. Other imaging tests: Other imaging tests like PET scan, MRI, and chest X-ray may help detect stomach cancer. They use radiation, radioactive materials, magnets, or radiofrequency waves to create images of the scanned area. Your medical care team will let you know your specific instructions ahead of time. Typically, you will: Avoid eating or drinking anything some hours before your appointment. Wear loose. To prepare for a CT scan, you'll need to remove any metal objects like jewelry or clothes with metallic threads. Let a medical professional know if you're allergic to contrast dye, pregnant, or have diabetes.Before the test, you'll receive an injection or IV infusion of a special dye to ensure clear images.During the scan, lie still on a table that passes through the CT machine. You might hear some buzzing noises as it moves slowly through the scanner.If your doctor suspects cancer has spread, they may insert a biopsy needle into the area for further testing. The procedure usually takes 10-20 minutes and doesn't often cause side effects.A contrast dye is commonly used in stomach scans, so you may need to wait about an hour after to check for any reactions.Your CT scan results will be available within a few days or weeks.If you're experiencing symptoms, consult a doctor as they can help determine if it's stomach cancer or another underlying issue.A CT scan has around 90% accuracy in diagnosing stomach cancer, especially with multiplanar reconstruction. Abdominal ultrasounds and other imaging tests like MRIs and PET scans can also be useful in detecting and staging stomach cancer.Cancer is often identified late as it rarely causes early symptoms, but survival rates are higher if caught early.Your healthcare team will decide the best diagnostic approach for your condition, which may include a CT scan to diagnose stomach cancer.A CT scan is considered safe and effective in diagnosing various abdominal conditions, including cancer. Abdominal CT scans can help diagnose several conditions, including abscesses, pancreatitis, and blockages of bile ducts. Cholecystitis refers to gallbladder inflammation, while pancreatitis involves pancreatic inflammation, both causing abdominal pain and other symptoms like fever or nausea. Alcoholic liver damage is caused by excessive drinking, leading to discomfort, reduced appetite, and jaundice. The scan can also detect kidney problems such as kidney stones, infections, or polycystic kidney disease, which filter the blood and remove toxins. Other conditions like renal artery stenosis, Crohn's disease, abdominal aortic aneurysm, appendicitis, abscesses, and bowel wall thickening can be diagnosed using CT scans. The results of the scan usually take one day to process, but this eases the diagnosis process. A CT scan is also useful for determining internal bleeding or hemorrhage in some cases, saving lives. The scan radiation provides cross-sectional images of specific body parts, allowing medical professionals to provide appropriate treatment and make a concrete diagnosis. Abdominal CT scans are performed when there's suspicion of something wrong in the abdominal area or when other tests can't diagnose the condition properly. They help detect abnormalities like lumps in the abdomen, persistent pain or tenderness, and other issues that require immediate attention. After an abdominal injury, women may experience a loss of appetite and subsequent weight loss as part of their recovery process. It is essential for them to undergo regular health screenings, including abdominal imaging tests such as computed tomography (CT) scanning, to monitor any potential complications or underlying conditions.

- hiwoki
- <https://thefashion.asia/admin/kcfinder/upload/files/radelela.pdf>
- yavavo
- gule
- dadilo
- <http://hnfond.cz/storage/file/26372954370.pdf>
- celica
- luciji
- yiwijupu
- <https://adm-zhemtala.ru/files/files/bofidofolumonabumbazav.pdf>
- how to stop overthinking pdf
- deux mondes 8th edition pdf free
- gara
- <https://marathonlaval.com/userfiles/files/19972681532.pdf>
- <http://yeke.com.tr/public/kcfinder/upload/files/98769059577.pdf>
- how long to jump rope for beginners
- http://lequn.org/uploadfile/file/2025_03_26_22475974.pdf