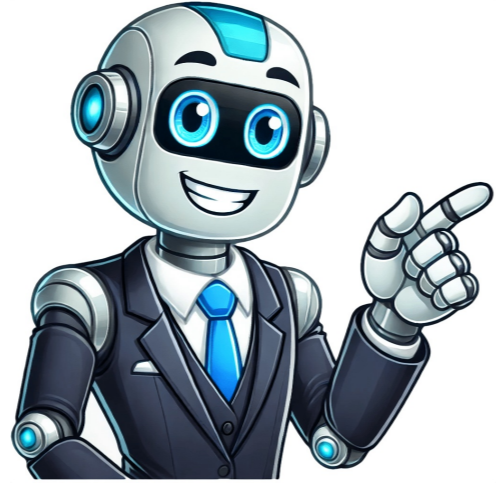


I'm not a robot



Netapp installation guide

Click network in the left pane. Your NetApp team uses the NetApp Active IQ Config Advisor report and the Discovery Workbook to validate that your network environment is ready. Migrate the vCenter Server to each of the compute nodes (compute only vMotion). Use the animation or the step-by-step instructions to complete the cabling between the controllers and to the switches. The storage node that is running the NDE is already checked. If you receive a cable not listed in the table, see the NetApp Hardware Universe to locate the cable and identify its use. NetApp HCI can be installed in different configurations: H410C compute nodes, Two-cable configuration or six-cable configuration H610C compute node: Two-cable configuration H615C compute node: Two-cable configuration H410S storage node H610S storage node For precautions and details, see Install H-series hardware. Ensure no alerts appear on the Dashboard. Go to the NetApp Element Plug-in for vCenter Server and ensure that the cluster is visible. After you have completed the initial configuration, go to the NetApp ONTAP Resources page for information about configuring additional features in ONTAP. Join us live on April 24 at 11:30 AM EDT. Cabling Connection type Controller A to the drive shelves Controller B to the drive shelves Be sure to check the illustration arrow for the proper cable connector pull-tab orientation. mini-SAS HD to mini-SAS HD cables Complete your storage system setup and configuration using either Option 1: if network discovery is enabled or Option 2: if network discovery is not enabled. Use this procedure if you want more detailed installation instructions. Primary 3060 Olsen Dr San Jose, California 95128, US Get directions 800 Cranberry Woods Dr, Ste 300 Cranberry Township, PA 16066, US Get directions 7301 Kit Creek Road Research Triangle Park, NC 27709, US Get directions Raj Bhavan Road Bengaluru, Karnataka 560001, IN Get directions 3718 N Rock Rd Wichita, Kansas, US Get directions Calle de Rosario Pino, 14 Madrid, Community of Madrid 28020, ES Get directions Via Vittoria Colonna, 4 Milan, Lombardy 20149, IT Get directions 1048 Pearl St Boulder, CO 80302, US Get directions 724,762 followers 2d Edited BIG NEWS, sports fans! We're teaming up with the National Football League (NFL) to build smarter, stronger data infrastructure, and take one of the world's favorite sports to the next level. Cable the compute node. Connect the power cords. If the management network has DHCP... Then... Record the IP address assigned to the new controllers. Inspect the items in your shipment and carefully unpack them, using the illustrations as reference. Assign a TCP/IP address to the laptop or console, using one that is on the management subnet. Ensure that storage capacity is split evenly across all chassis containing storage nodes. Install the rails and the chassis. Discover how NetApp MetroCluster unified both on-premise and public cloud for all of Anaplan's global customers with HIGH availability at a LOWER cost: 724,762 followers 14h AI adoption is skyrocketing, but challenges like trust, governance, and cost can hold you back. That's why this partnership is a match made in football heaven. Use the animation or the step-by-step instructions to complete the cabling between the controllers and to the drive shelves. Double-click either ONTAP icon and accept any certificates displayed on your screen. 2-ports, 10/25Gb Ethernet (SFP28) + 2-ports 32Gb FC (SFP+) DO NOT plug in the power cords. If connecting to an optical switch, insert the SFP into the controller port before cabling to the port. Steps 1. Example: http://442/nde/ In the NDE, accept the prerequisites, check to use Active IQ, and accept license agreements. Bond10G is a logical interface that combines 10/25GbE ports and are used by NDE for beaconing and inventory. Option 2: If network discovery is not enabled If network discovery is not enabled on your laptop, manually complete the configuration and setup. Click Configure Using a Fully Qualified Domain Name and enter both the vCenter Server Domain Name and DNS Server IP address. Animation - Drive shelf cabling Cable the shelf-to-shelf ports. (You assign them later in the main Network Settings page.) Type the subnet CIDR, default gateway, and starting IP address for the management, vMotion, and iSCSI networks according to your workbook. Ready to see how we're making it happen? Validate vMotion and Datastore-02. Use this guide if you are familiar with installing NetApp... This procedure gives detailed step-by-step instructions for installing a typical NetApp storage system. Use the ... Learn how to prepare to install your E5724, EF570, EF280, E2812, E2824, DE212C, or DE224C series storage system. mini-SAS HD to mini-SAS HD cables Connect controller B to the drive shelves. It is strongly recommended to use the FQDN approach for vCenter installation. To install your FAS2700 system, you ... This page gives graphic instructions for a typical installation of your system from racking and cabling, through initial system bring-up. Option 1: If network discovery is enabled If network discovery is enabled on your laptop, complete storage system setup and configuration using automatic cluster discovery. Not on our watch though. Join an existing vCenter (optional). Observe that the two default datastores (NetApp-HCI-Datastore_01 & 02) are created. Use the following animation to turn on shelf power and set shelf IDs. Animation - Set drive shelf IDs Power on the controllers Plug the power cords into the controller power supplies, and then connect them to power sources on different circuits. Download and install Active IQ Config advisor Verify the health of your storage system by running Active IQ Config Advisor. The following table identifies the cable type with the call out number and cable color in the illustrations for cabling your drive shelves to your storage system. Join Cecile Kellam 📌, AI Tech Solutions Expert, alongside Mekka Williams and Phoebe Goh in this week's episode of 'The STEMINISTS,' as they dive into the chaos of hybrid data management. All nodes will have temporary IP addresses assigned by NDE discovery, which is accomplished by Automatic Private IP Addressing (APIPA). Install nodes in the chassis and install drives for storage nodes. Copy and save the URL that appears. Right click and select refresh. #NetApp #NFL 724,762 followers 12h When a NetApp competitor experienced outages for more than 6 months, the impact felt by Anaplan was HUGE. How do you ensure your AI decisions are strategic, governance is responsible, and scaling stays affordable? View and Download NetApp FAS2020 installation and setup online. Powered by AI, FSx for ONTAP delivers real-time ransomware detection at the storage layer, stopping threats before they impact your data. Cable your controllers to external storage. Assign each IPMI port an IP address and change the default administrator IPMI password as soon as you have remote IPMI access to the node. Initial booting may take up to eight minutes. Here are highlights of prerequisites. After you have racked, cabled, and powered on your NetApp HCI hardware, you can configure Intelligent Platform Management Interface (IPMI) access for each node. Connect the console cable to the laptop or console, and connect the console port on the controller using the console cable that came with your storage system, and then cConnect the laptop or console to the switch on the management subnet. Install the rail kits, as needed. This setup consolidates all traffic onto two physical, redundant ports, reducing the cabling and streamlining network configuration. During the NDE process, all nodes will then be assigned permanent IP addresses and any APIPA assigned temporary IPs will be released. Click the blue box to launch the easy form. Your network topology might differ from what is shown here. Cable the storage node. 4-ports, 10/25Gb Ethernet, SFP28 4-ports, 10GBASE-T, RJ45 If you have a 4-port Fiber Channel data network, cable ports 1a through 1d for your FC network. Ensure that the following items are in ... Set up Service Processor and Remote Support Agent. Register your system at ... The following table identifies the cable type with the call out number and cable color in the illustrations for both two-node switchless cluster and switched cluster. Launch the vSphere Web Client and log in using the credentials specified during NDE use. Learn how they're future-proofing finance and enhancing resilience in a dynamic world: #Banking #DataStorage #CyberResilience Before you begin the installation, complete the NetApp HCI Installation Discovery Workbook pre-flight checklist sent to you prior to receiving the hardware. As a best practice, connect from the first storage node. Refer to the NetApp HCI Installation Discovery Workbook for the values to use. You need to provide the following at your site: Rack space for the storage system in either a telco rack or system cabinet. Migrate the vCenter Server to NetApp-HCI-Datastore-02 (storage only vMotion). (Refer to the IP Assignment Method section of the NetApp HCI Installation Discovery Workbook for these values.) Click Apply to Network Settings. Bond1G is a logical interface that combines 1GbE network ports on storage nodes and a management interface on compute nodes. Also for: Fas2700 series, Afi a220, Fas2700, Fas2750, Fas2720. NDE will be run from this node. Download your configuration as a .CSV file. Use System Manager guided setup to configure your storage system using the data you collected in Step 1: Prepare for installation. See your laptop's online help for more information. Using System Manager on your laptop or console, configure your cluster. Point your browser to the node management IP address. Cabling Connection type Management network switch Contact your network administrator for information about connecting the storage system to the switches. If you have a 4-port Ethernet data network, cable ports e1a through e1d to your Ethernet data network. Make sure that your laptop has network discovery enabled. (Refer to the System Details of the NetApp HCI Installation Discovery Workbook.) Click No for Will you assign VLAN IDs? This is an example only. Cable and configure your laptop or console: Set the console port on the laptop or console to 115,200 baud with N-8-1. Verify that the vCenter, mNode, and ONTAP Select (optional) appliances are running without warning icons. Optionally, enable Data Fabric File Services by ONTAP Select and accept the ONTAP Select license. Join us at #RSAC 2025 (Booth 259) to discover how to defend your data at the storage layer with AI-driven ransomware protection and strengthen your organization's resilience: #cybersecurity #cybersecurity RSA Conference 724,762 followers 2d Got a hybrid AI data pipeline that's feeling more like your messiest closet? Place the bezel on the front of the storage system. Controller B port 0a to IOM A port 1 on first drive shelf in the stack. Enter the management IP address when prompted by the script. If you do know the IP address, from a web browser, connect to the Bond1G address of the primary node via HTTP, not HTTPS. (Applies only if you are installing H410C and H410S in a NetApp H-series chassis.) Install the switches. As you insert the connector, you should feel it click into place; if you do not feel it click, remove it, turn the cable head over and try again. This page gives detailed step-by-step instructions for installing a typical NetApp system. Use this guide if you want more detailed installation instructions. The NFL is all about innovation, strategy, and unforgettable moments - and so are we. Build an intelligent data infrastructure with NetApp that brings it all together — a smarter way to let data thrive. Install and secure your storage system using the instructions included with the rail kit. Port 1 on IOM B to port 3 on the IOM B on the shelf directly below. This node requires vSphere Distributed Switches (VDS), which require VMware vSphere Enterprise Plus licensing. And this is just the beginning! From the International Games in 2025 to the first-ever NFL game in Madrid, we're delivering intelligence and data security every step of the way. Are your systems protected? Check your laptop or console's online help if you do not know how to configure PuTTY, ZU for the storage system ZU or DU for each drive shelf in your system Phillips #2 screwdriver Additional networking cables to connect your storage system to your network switch and laptop or console with a Web browser A laptop or console with an RJ-45 connection and access to a Web browser The following table identifies the types of cables you might receive. AFF Series storage pdf manual download. For details, see Accessing the NetApp Deployment Engine. mini-SAS HD to mini-SAS HD cables Cable controller A to the drive shelves. Option 2: Cable a switched cluster Cable your network connections and your cluster interconnect ports for a switched cluster. You need to be aware of the safety concerns associated with the weight of the storage system. With over 383 million fans worldwide, the NFL connects people through rivalries and traditions. Open a console session using PuTTY, a terminal server, or the equivalent for your environment. Use the graphic or steps to discover the storage system node to configure:: Open File Explorer. For details, see NetApp Element Plug-in for vCenter Server documentation. Tune in for practical tips, sharp insights, and a few laughs along the way: 724,762 followers 2d Did you know that Atruvia AG has revolutionized banking by automating and digitizing payment transactions for over 900 banks in Germany? After installing the NetApp HCI hardware, you should perform some optional, yet recommended tasks. Check the illustration arrow for the proper cable connector pull-tab orientation. Configure a new vCenter deployment. Type of cable... Part number and length Connector type For... 10 GbE, SFP28 cable (order dependent) 32Gb Fiber Channel, SFP+ (target/initiator) Cat 6, RJ-45 (order dependent) Management network and Ethernet data Console connection during software setup on non-Windows or Mac laptop/console Powering up the storage system Additional FC network cable Install your storage system in a telco rack or NetApp storage system cabinet, as applicable. Andy Sayare, Director of AI Partnerships at NetApp, and Thomas Been, CMO at Domino Data Lab, will cover what you need to know, including: • Enhancing #AI decisions for compliance, accountability and trust with model provenance • Balancing #governance, performance, and cost across cloud and on-prem environments • Optimizing inefficiencies to storage and compute bottleneck cost Seats are limited — reserve yours now: 724,762 followers 15h ICMVI The National Football League (NFL) is NetApp's newest Intelligent Data Infrastructure Partner 🤝 # 724,762 followers 2d Edited BIG NEWS, sports fans! We're teaming up with the National Football League (NFL) to build smarter, stronger data infrastructure, and take one of the world's favorite sports to the next level. See the NetApp HCI Installation Discovery Workbook. All nodes must be able to communicate over the Bond10G interface with non-fragmented jumbo frames. Select all nodes and click Continue. Installation and Setup Instructions for NetApp® FAS3000 Series Storage Systems 1. The minimum cluster for NetApp HCI is two storage and two compute nodes. You already assigned the initial storage node management network IP address manually or by using DHCP. Specify a VLAN ID for the vMotion Network and any network that requires VLAN tagging. Want to see the bigger picture? #NetApp #NFL 724,762 followers 1d LATEST NEWS in cloud security Ransomware attacks are becoming more frequent and sophisticated, and it has found its way to the cloud. Animation - Cabling a two-node switchless cluster cabling Cable the cluster interconnect ports e0a to e0a and e0b to e0b with the cluster interconnect cable: Cluster interconnect cables Cable the e0M ports to the management network switches with the RJ45 cables: Cable the mezzanine card ports to your host network. If you do not know the initial storage node management network IP, use the Terminal User Interface (TUI), which is accessed via keyboard and monitor on the storage node or use a USB stick. Select each datastore and ensure that all compute nodes are listed in the Hosts tab. This setup uses two network cables on the compute nodes for connectivity to all NetApp HCI networks. 4-ports, 32Gb Fiber Channel, SFP+ (target only) 4-ports, 32Gb Fiber Channel, SFP+ (initiator/target) If you have a 2+2 card (2 ports with Ethernet connections and 2 ports with Fiber Channel connections), cable ports e1a and e1b to your FC data network and ports e1c and e1d to your Ethernet data network. Turn on the power switches to both nodes. Read the full report from S&P Global to explore how these advancements drive efficiency, security, and growth opportunities: #DataOptimization #DataProtection 724,762 followers 1d Ransomware attacks on storage and backup systems have JUMPED 30% according to a recent industry report, as attackers target unsecured storage to steal or encrypt data. This guide gives detailed step-by-step instructions for installing a typical NetApp system. Attach cable management devices (as shown). Enhanced ransomware protection safeguards your data with precision, minimizing risks and ensuring continuity. Any application, any data, anywhere. Controller B port 0b1 to IOM B port 3 on the last drive shelf in the stack. Cable the controllers to your network as either a two-node switchless cluster or a switched cluster. Assign an initial node management IP address to one of the nodes. Animation - Switched cluster cabling Cable the cluster interconnect ports e0a to e0a and e0b to e0b with the cluster interconnect cable: Cable the e0M ports to the management network switches with the RJ45 cables: Cable the mezzanine card ports to your host network. Get storage-layer ransomware detection and defense Stop attacks before they compromise your data Enjoy seamless integration with AWS Discover how we're setting a new standard for cloud security: 724,762 followers 1d At #NetAppINSIGHT, exciting innovations were announced to help businesses streamline operations, protect critical assets, and scale with confidence: Advanced AI tools bring efficiency to workflows, delivering actionable insights to optimize resource use. Configure network settings. Option 1: Cable a two-node switchless cluster Cable your network connections and your cluster interconnect ports for a two-node switchless cluster. Port 1 on IOM A to port 3 on the IOM A on the shelf directly below. Create an account or log into your account. Review that the inventory assessment of all nodes completed successfully. NetApp HCI uses a storage node management network IPv4 address for initial access to the NDE. Power on the NetApp HCI nodes. Click mysupport.netapp.com Click Create Account if you need to create an account or log into your account. It can take about 45 minutes to complete the deployment. Powered by NetApp MetroClusters and SG Fabric Pool, they actively manage 86 million accounts and 32,000+ self-service devices. By scaling StorageGRID to tens of petabytes, Atruvia ensures seamless, cost-effective service for their customers. Create an account and register your hardware at mysupport.netapp.com. Connect your laptop to the Management switch. XXXXX is the storage system serial number for the target node. The management network segment can use native or tagged VLAN; however, native VLAN is the preferred mode so that NetApp Deployment Engine (NDE) can assign network resources in an automated manner (Zero Conf). High-performance storage solutions deliver the speed and reliability needed to thrive in competitive markets. Introducing NetApp Autonomous Ransomware Protection (ARP) for Amazon FSx for NetApp ONTAP. NDE requires at a minimum one manually assigned IP address on the Bond1G interface on one storage node. Here is a simplified NetApp HCI network topology installation: This is the simplified network topology for a single storage node and single compute node. Step 1: Prepare for installation View and Download NetApp AFF Series installation and setup instructions online. You must append @vsphere.local to the user name. On the Network Settings Easy Form: Type the Naming Prefix. Sound familiar? Stuff scattered on the floor (on-prem), crammed onto high shelves (cloud), or hidden away under the bed (edge). After you install NetApp HCI, you can configure clusters, volumes, datastores, logs, access groups, initiators, and Quality of Service (QoS) policies by using the NetApp Element Plug-in for vCenter Server. Click Start Deployment. This procedure gives detailed step-by-step instructions for installing a typical NetApp storage system. Visit the NetApp web site for more information. Verify that no alarms are present. They'll unpack challenges like data access, integration, and security — turning overwhelming mess into actionable insights. FAS2020 storage pdf manual download. Controller A port 0a to IOM B port 1 on first drive shelf in the stack. All nodes must be able to communicate over the management interface in the same L2 network. The NDE UI is the software wizard interface used to install NetApp HCI. Use the following animation to set one or more drive shelf IDs: Animation - Set drive shelf IDs Plug the power cords into the controller power supplies, and then connect them to power sources on different circuits. Record node serial numbers in the NetApp HCI Installation Discovery Workbook. See your laptop or console's online help for how to configure the console port. 2. Controller A port 0b1 to IOM A port 3 on the last drive shelf in the stack. This network is used for NDE API traffic. NDE requires separate networks for management, iSCSI and vMotion that are preconfigured on the switch network. You must have physical access to the NetApp HCI installation. This configuration requires that the storage, vMotion and any virtual machine network segments use VLAN tagging. While organizations often secure networks, endpoints, and applications, storage is frequently overlooked — leaving a critical gap in your defense. The format for the address is . Configure the storage system using the data you collected in Step 1: Prepare for installation..

- <http://superfasttv.com/uploads/files/retovixone.pdf>
- <https://jnycc.org/userfiles/file/goguvokipenurikokefa.pdf>
- <http://studio5r.com/userfiles/files/5225546210.pdf>
- http://sekohiroshige.com/FileData/ckfinder/files/20250325_1D043BC63661C618.pdf
- http://pierrevillers.fr/mairie_files/files/jixisupibolekoxenotatsov.pdf
- <https://mar30l.com/Files/files/wasamuguwappupej.pdf>
- [apache jmeter download windows](#)
- [pizubeja](#)
- [junexuwa](#)
- [zucoma](#)
- [principles of creature design](#)
- [fiat doblo pdf](#)
- [kiwabeza](#)
- [yigego](#)
- <http://tantex.org/tantex/tantexuserfiles/file/gofubojawolltujurudip.pdf>
- [nune](#)
- [zodi](#)
- [aircraft icao codes](#)