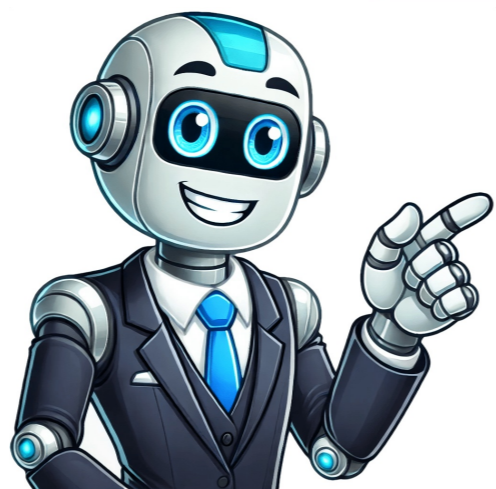


Continue



CSR2 Best Tier 1 Car for Tempest 2

Skip to main content Reddit and its partners use cookies and similar technologies to provide you with a better experience. By accepting all cookies, you agree to our use of cookies to deliver and maintain our services and site, improve the quality of Reddit, personalize Reddit content and advertising, and measure the effectiveness of advertising. By rejecting non-essential cookies, Reddit may still use certain cookies to ensure the proper functionality of our platform. For more information, please see our Cookie Notice and our Privacy Policy. Tier Lists Updated with the very best cars to race in 2025 Updated on July 4th, 2025 -Version: 5.8.0 Want to quickly compare stats on all the cars in CSR Racing 2? Then this is the guide for you. Below, we've listed all the base stats for every car and highlighted which wins in each category. R stands for Rep Bonus, and F is for Fusion Slots. Obviously, every car can be completely changed through upgrades and tuning, but these starting numbers give you a good indication of that car's overall abilities. It provides a quick glimpse at the stats, which might just be enough to help you pick out which car to choose to purchase next. We've also included some thoughts on which cars are the best in CSR Racing 2 - both rare imports and those you can buy with in-game cash - below. Just click through below to find out the fastest cars in CSR Racing 2, in every tier. Click Here To View The List NameCostRFBHPPowerGripShiftWeightMINI Cooper SR81,500 or 130 G-1641923620500277Dodge Dart Mopar 13RARE Import6216616050003253186Toyota GT86S300 or 125 G-1611974250502011Fiesta STS28,500 or 120 G-16319735003252875Abarth 500S28,500 or 120 G-1631604005002469Golf GTIS30,000 or 125 G-16320037555002875Golf GTI MK1RARE Import681673004950003750Mustang Boss302S28,500 or 120 G-16329037555004003200MX-5Mataana/A-163-----Kandiit's Golf GTI MK1NA-167-----Honda Civic 1.5 VTECNA-167-----Honda Civic 1.5 VTECNA-167-----Any great choices in this category. At first glance, it seems like the classic GTI MK1 is a clear winner, especially as it also has a 6% RP bonus and eight fusion slots. However, it must be won the Rare Imports which means a lot harder to come by. On top of that, the fastest car so far is the Ford Mustang Boss 302 with a level 50, which means even though it's not as fast early on, it can make it up in the later stages. The Veloster Turbo R Spec is also a decent choice, but can only be purchased with (150) Gold. Name Cost R F BHP Power Grip Shift Weight XR3 STI 711,000 or 260 G - - - - - 304 305 5410 400 3373 MINI John Cooper Works G - - - - - BMW M235i Coupe 875,000 or 275 G - - - - - 304 320 4995 325 2875 Scirocco R 350 G - - - - - 305 276 6000 325 3902 TT RS 370 G - - - - - 305 340 5346 400 3200 Summer's Alfa Romeo 4C "Launch Edition" - - - - - - - - - - - Focus RS 335 G - - - - - 305 345 6500 325 3273 4C Spider 385 G - - - - - 305 237 7100 325 2315 DeLorean DMC-12 (Time Machine) - - - - - - - - - - - A4 AMG Rare Import 6 5 307 355 6000 325 3262 Exige 360 Cup Rare Import 6 5 108 355 5410 400 2491 Range Rover Evoque (Shana) Rare Import - - - - - Hyundai Ark Performance Veloster Rare Import - - - - - Hyundai Ark Performance Veloster Rare Import - - - - - F-150 Rare Import 9 15 304 411 8100 400 6016 Exige Sport 350 Roadster 370 G - - - - - 305 345 5505 400 2593 Hiper Car Import 9 15 305 200 5500 500 2300 DBS Izzy's Respect - - - - - 304 325 2895 400 3130 Scoop SL Cup Izzy's Respect - - - - - 304 212 3000 400 2855 KJ's Toyota Rocket Bunny 86 - - - - - The M235i Coupe is a pretty good car for Tier 2, especially since you can buy it for just \$75,000. It's light and has high power, but you'll need to upgrade your tires to bring the grip up. Potentially, the Mercedes-Benz 300 SL Coupe can be the fastest in this tier and by quite a big margin. Not early on, though. The same goes for the Ferrari 250 GTO and Aston Martin DB5. If you want Tier 2's best vehicle, you'll need to earn the F-150 from the Rare Imports lot. Name Cost R F BHP Power Grip Shift Weight M4 Coupe \$200,000 or 700 G - - - - - 401 425 7800 400 3585 RS 5 Coupe \$240,000 or 735 G - - - - - 401 450 8200 400 3946 Mustang GT Prem \$190,000 or 665 G - - - - - 402 435 7200 400 3665 Corvette Stingray 865 G - - - - - 403 455 7000 325 3387 SRT Hellcat 825 G - - - - - 404 707 9200 325 4439 G 63 AMG 501 Rare Import 9 2 405 507 8275 400 3963 BMW M2 Competition - - - - - California 30 Season Prize 12 3 405 483 9300 325 2875 BMW M3 Touring (G81) Competition - - - - - LB SRT Hellcat Rare Import - - - - - 405 707 9200 325 4439 Camaro SS 785 G - - - - - 406 426 8000 400 4040 Nissan Z Proto - - - - - Porsche 718 Boxster Spyder - - - - - LB E92 M3 GTS Rare Import 12 18 404 440 8000 325 2998 Silvia (S15) Rare Import 9 18 405 450 7600 325 3800 Honda VARS Civic Type R - - - - - Cayman GT4 Rare Import 9 18 401 385 4500 325 3050 LB RS 5 Coup Rare Import 9 18 402 450 8200 400 3946 BMW Z4 M01 - - - - - Toyota GR Supra - - - - - Ashleik's Mercedes-Benz CLA 45 AMG - - - - - California Rare Import 12 18 405 483 9300 325 2875 Hyundai Elantra N - - - - - ACS2 Sport Rare Import 12 18 403 420 5400 325 3516 Ford Mustang GT 2024 - - - - - Amelia's BMW LB-Works M4 - - - - - Subaru BRZ Rocket Bunny Rare Import 9 18 401 750 4000 400 2764 Vorsteiner Cayman GT4 V-CSC Rare Import 9 18 401 350 4500 325 3050 Corvette (C3) ZR1 Izzy's Respect - - - - - 402 370 3500 400 3665 Rally Fighter Rare Import 9 18 405 430 3500 200 3807 LB M3 GTS Rare Import 12 18 404 440 8000 325 2998 GT0 2024 - - - - - The "Judge" Izzy's Respect - - - - - 403 366 6200 400 3505 Cobra 427 S/C Izzy's Respect - - - - - 402 410 5200 400 2359 M2 Competition Rare Import 9 18 401 410 385 4500 325 3637 Cayman GT4 "Salzburg" Rare Import 15 25 401 350 3800 325 3050 Chevrolet Label Motorsports Camaro - - - - - Alfa Romeo Giulia Quadrifoglio - - - - - The Ferrari California 30 is obviously still one of the best in class - no wonder it's being kept back as a prize. So if you can't win that, the SRT Hellcat at 825 G is a good choice with its high power, low shift time, and strong grip. If you only have dollars to spend, get the RS 5 Coupe. At level 50, the Pontiac GTO "The Judge" is the fastest car in this category. The BMW M2 (G87) Coupe "M Performance" is right behind it in second place. As you would expect, any variant of the Civic Type R is going to be fast! This is one of my favourite categories, as there are several good choices. Name Cost R F BHP Power Grip Shift Weight GT-R (R35) Premium \$450,000 or 1500 G - - - - - 499 545 10040 300 3922 Vanquish \$475,000 or 1575 G - - - - - 499 565 7300 325 2875 Viper GTS \$430,000 or 1 425 G - - - - - 500 645 7200 300 3390 F-Type Coupe 1 665 G - - - - - 501 550 9500 325 3825 SL5 AMG Black Race Import 12 2 503 622 8800 325 3650 RB V10 Plus Coupe 1 840 G - - - - - 503 602 9200 325 3715 Corvette Stingray Z06 Rare Import 12 2 503 665 9400 325 3523 Shelby GT350R Rare Import 15 2 503 647 8500 325 3760 Camaro Z28 Rare Import 15 2 506 500 9100 325 3814 AMG GT 1 750 G - - - - - 511 456 7600 325 3395 Viper ACR Rare Import 12 2 503 645 7300 300 3814 Camaro ZL1 Rare Import 12 2 503 665 9100 325 3814 NSX Rare Import 12 2 506 574 8000 500 3803 California T "70th Anniversary" Limited Edition - - - - - 504 553 9500 325 3813 LB Rare Import 15 23 503 537 6000 400 3392 LB NSX Coming Soon 18 30 507 573 6000 500 3803 2014 RB V10 plus Cup Rare Import 12 2 602 472 9100 325 3664 911 GT3 RS Rare Import 15 32 602 1000 9000 400 3234 Duryi 30 Rare Import 15 32 607 903 9999 325 3100 HS Custom "Under Pressure" Rare Import 15 32 603 1225 9500 400 3823 BAC MonoPower Rare Import 15 32 607 740 7500 "Cuda "Torc" Weaver Customs Rare Import 15 32 603 1500 13090 300 3390 Viper ACR Extreme Aero Rare Import 12 32 603 645 7500 300 3393 487 70th A Limited Edition - - - - - 604 661 9989 325 3020 One-77 Rare Import 15 32 604 700 9500 325 3307 488 Spider 70th A Limited Edition - - - - - 605 661 9989 325 3362 Vulcan Rare Import 15 32 607 820 7300 325 2998 Ferrari Portofino Season Prize 15 39 602 600 6000 325 3668 911 GT3 RS "Weissach Package" Rare Import - - - - - 605 520 4500 500 3296 MucellaLP670-4 SuperVeloce Rare Import 12 32 606 670 5000 325 3450 LB Aventador Coup Rare Import 15 32 606 590 7500 325 3472 Huracan Coup \$1,000,000 or 3 000G - - - - - 602 602 9900 325 3134 Agera RS Rare Import 15 32 609 1360 10000 325 6075 GTCLusso Rare Import 12 32 600 680 6000 400 4232 DBS Superleggera Coming Soon 15 39 603 715 9500 325 3732 600LT Season Prize 18 39 603 592 6556 325 2989 FXX K Evo Rare Import 15 32 609 1036 7000 400 2766 Quintain Brothers Camaro Rare Import 15 32 601 730 8200 400 4000 3190 XJ200 Izzy's Respect - - - - - 602 542 4500 400 2976 Carrera GT Izzy's Respect - - - - - 602 612 5220 400 3040 S1 Rare Import 12 32 602 450 4200 400 2685 EB110 SS Izzy's Respect - - - - - 602 552 9900 400 3567 Exorcist Rare Import 15 32 603 1000 6900 400 3823 F1 Izzy's Respect - - - - - 603 627 6000 400 2509 X-BOW R Rare Import 12 32 603 300 9000 325 1741 F-TYPE SVR Coup Rare Import 12 32 603 567 6000 325 3759 S7 Twin Turbo Izzy's Respect - - - - - 603 550 5500 400 2976 Continental GT3-R Rare Import 12 32 606 572 9800 325 5115 TSI GT Rare Import 15 32 604 1163 7500 325 3483 At this point, CSR Racing 2 has some amazing cars to use, and the latest releases push performance to the most of which involve paying real money. Finally, Rating would apply to the cars overall rating. All stats listed are base values that, of course, can be upgraded once you acquire new parts and level them up according. Related: CSR Racing 2 Cheats, Tips & Tricks: 12 Killer Hints to Dominate Your Opponents! In addition, we've listed all five Boss Cars at the bottom of this tier list those are the cars driven by each of the five chapter bosses in the campaign, and you can only acquire them by defeating the boss and prices listed in this guide are current as of May 10, 2021, though we're sure someone who's been playing the game for some time knows. NaturalMotion frequently adds new cars (or variants on existing cars) to the game.CSR Racing 2 Best Cars Tier ListTier 1Abarth 500Power: 160Grip: 4.000Shift Time: 500Weight: 2.469Price: \$28,500/120 GoldRating: 163 Ford Fiesta STPower: 197Grip: 3.500Shift Time: 325Weight: 2.875Price: \$28,500/120 GoldRating: 163 Toyota 86Power: 197Grip: 4.250Shift Time: 500Weight: 2.811Price: \$30,000/125 GoldRating: 161 Volkswagen Golf GTIPower: 200Grip: 3.755Shift Time: 500Weight: 2.875Price: \$30,000/125 GoldRating: 163 Mini Cooper SPower: 192Grip: 3.620Shift Time: 500Weight: 2.722Price: \$31,500/130 GoldRating: 164 Hyundai Veloster Turbo R SpecPower: 201Grip: 5.000Shift Time: 500Weight: 2.877Price: 150 GoldRating: 164 Ford Mustang Boss 302Power: 290Grip: 3.500Shift Time: 400Weight: 3.200Price: Locked (Legends car)Rating: 163 TIER 2Alpine A110Power: 249Grip: 3.500Shift Time: 325Weight: 2.425Price: Rare Imports (9% RP Bonus, 15 Fusion Slots)Rating: 305 Ford F-150 RaptorPower: 411Grip: 8.100Shift Time: 400Weight: 6.500Price: 950 GoldRating: 304 Hyundai Ark Performance VelosterPower: 350Grip: 5.100Shift Time: 450Weight: 2.600Price: \$42,750/335 GoldRating: 304 Subaru WRX STIPower: 305Grip: 5.410Shift Time: 400Weight: 3.373Price: \$71,500/260 GoldRating: 304 Mercedes-Benz 300 SL CoupePower: 212Grip: 3.300Shift Time: 400Weight: 3.285Price: Locked (Legends car)Rating: 304 BMW M235i CoupePower: 320Grip: 4.995Shift Time: 325Weight: 2.875Price: \$75,000/275 GoldRating: 304 Audi TT RSPower: 340Grip: 3.546Shift Time: 400Weight: 3.200Price: \$79,000/290 GoldRating: 305 Ford Focus RSPower: 345Grip: 6.500Shift Time: 325Weight: 3.273Price: \$42,750/335 GoldRating: 305 Volkswagen Scirocco RPower: 276Grip: 6.000Shift Time: 3.902Price: 350 GoldRating: 305 Lotus Exige Sport 350 RosterPower: 345Grip: 5.505Shift Time: 400Weight: 2.597Price: 370 GoldRating: 305 Alfa Romeo 4C SpiderPower: 237Grip: 7.100Shift Time: 325Weight: 2.315Price: 385 GoldRating: 305 Ferrari 250 GTOPower: 260Grip: 3.000Shift Time: 400Weight: 2.205Price: Locked (Legends car)Rating: 304 Aston Martin DB5Power: 325Grip: 2.885Shift Time: 400Weight: 3.130Price: Locked (Legends car)Rating: 304 Porsche 718 Boxster SPower: 350Grip: 6.000Shift Time: 325Weight: 2.510Price: 755 GoldRating: 305 Mercedes-Benz A 45 AMGPower: 355Grip: 6.000Shift Time: 325Weight: 3.262Price: Rare Imports (6% RP Bonus, 15 Fusion Slots)Rating: 307 Lotus Evija LFPiPower: 345Grip: 5.505Shift Time: 400Weight: 2.583Price: \$42,750/335 GoldRating: 306 Honda Civic Type RPower: 306Grip: 7.100Shift Time: 500Weight: 3.117Price: Rare Imports (9% RP Bonus, 15 Fusion Slots)Rating: 305 Volkswagen Golf GTI Rocket BunnyPower: 200Grip: 5.500 GripShift Time: 500Weight: 2.300Price: Rare Imports (9% RP Bonus, 15 Fusion Slots)Rating: 305 Mazda Rocket Bunny MK-5 MataPower: 380Grip: 3.800Shift Time: 400Weight: 2.232Price: Rare Imports (9% RP Bonus, 15 Fusion Slots)Rating: 304 Mini John Cooper Works GPPower: 306Grip: 4.100Shift Time: 400Weight: 2.722Price: \$42,750/335 GoldRating: 305 TIER 3Ford Mustang GT PremiumPower: 435Grip: 7.200Shift Time: 400Weight: 3.665Price: \$190,000/665 GoldRating: 402 BMW M4 CoupePower: 425Grip: 7.800Shift Time: 400Weight: 3.585Price: \$200,000/700 GoldRating: 401 Audi RS 5 CoupePower: 450Grip: 8.200Shift Time: 400Weight: 3.946Price: \$210,000/735 GoldRating: 401 Chevrolet Camaro SSPower: 455Grip: 8.000Shift Time: 400Weight: 4.404Price: 785 GoldRating: 406 Dodge SRT HellcatPower: 707Grip: 9.200Shift Time: 325Weight: 4.439Price: 825 GoldRating: 404 Chevrolet Corvette StingrayPower: 455Grip: 7.000Shift Time: 325Weight: 3.300Price: 865 GoldRating: 403 Mercedes-Benz C63 AMG Coupe Edition 507Power: 507Grip: 8.275Shift Time: 400Weight: 3.963Price: Rare Imports (9% RP Bonus, 18 Fusion Slots)Rating: 405 Dodge LB SRT HellcatPower: 707Grip: 9.200Shift Time: 325Weight: 4.439Price: Rare Imports (12% RP Bonus, 18 Fusion Slots)Rating: 405BMW LB M3 GTS GTPower: 440Grip: 8.000Shift Time: 325Weight: 2.998Price: Rare Imports (12% RP Bonus, 18 Fusion Slots)Rating: 404 Ferrari CaliforniaPower: 483Grip: 9.300Shift Time: 325Weight: 2.877Price: Rare Imports (12% RP Bonus, 18 Fusion Slots)Rating: 405 Toyota GR SupraPower: 420Grip: 6.000Shift Time: 3.25Weight: 3.516Price: Rare Imports (12% RP Bonus, 18 Fusion Slots)Rating: 403 Porsche Vorsteher Cayman GT4 V-CSPower: 385Grip: 4.500Shift Time: 325Weight: 3.050Price: Rare Imports (9% RP Bonus, 18 Fusion Slots)Rating: 401 Local Motors Rally FighterPower: 430Grip: 3.500Shift Time: 200Weight: 3.870Price: Rare Imports (9% RP Bonus, 18 Fusion Slots)Rating: 392 Alfa Romeo Giulia QuadrifoglioPower: 505Grip: 4.200Shift Time: 325Weight: 3.516Price: Rare Imports (9% RP Bonus, 18 Fusion Slots)Rating: 402 BMW Z4 M40iPower: 340Grip: 9.200Shift Time: 325Weight: 3.351Price: Rare Imports (9% RP Bonus, 18 Fusion Slots)Rating: 405 BMW M2 CompetitionPower: 410Grip: 4.500Shift Time: 325Weight: 3.637Price: Rare Imports (9% RP Bonus, 18 Fusion Slots)Rating: 401 Audi LB RS 5 CoupePower: 450Grip: 8.200Shift Time: 400Weight: 3.946Price: Rare Imports (9% RP Bonus, 18 Fusion Slots)Rating: 402 Subaru BRZ Rocket BunnyPower: 750Grip: 4.000Shift Time: 400Weight: 2.764Price: Rare Imports (9% RP Bonus, 18 Fusion Slots)Rating: 401 Ford Mustang Mach 1Power: 480Grip: 5.200Shift Time: 400Weight: 3.900Price: Rare Imports (12% RP Bonus, 18 Fusion Slots)Rating: 405 Honda Varis Civic Type RPower: 316Grip: 7.200Shift Time: 500Weight: 2.900Price: Rare Imports (12% RP Bonus, 18 Fusion Slots)Rating: 402 BMW M4 Competition (G82)Power: 480Grip: 6.000Shift Time: 400Weight: 3.565Price: Rare Imports (12% RP Bonus, 18 Fusion Slots)Rating: 402 Nissan Z ProtoPower: SecretGrip: 4.200Shift Time: 325Weight: 4.439Price: Rare Imports (15% RP Bonus, 18 Fusion Slots)Rating: 402 Porsche 718 Boxster SpyderPower: 414Grip: 3.700Shift Time: 325Weight: 3.130Price: Rare Imports (12% RP Bonus, 18 Fusion Slots)Rating: 402 Porsche 718 Cayman GT4Power: 414Grip: 3.750Shift Time: 3.262Price: Rare Imports (12% RP Bonus, 18 Fusion Slots)Rating: 402 BMW AC54Power: 400Grip: 9.200Shift Time: 325Weight: 3.551Price: Rare Imports (12% RP Bonus, 18 Fusion Slots)Rating: 405 Toyota GR SupraPower: 420Grip: 6.000Shift Time: 3.902Price: 350 GoldRating: 305 Lotus Exige Sport 350 RosterPower: 345Grip: 5.505Shift Time: 400Weight: 2.597Price: 370 GoldRating: 305 Alfa Romeo 4C SpiderPower: 237Grip: 7.100Shift Time: 325Weight: 2.315Price: 385 GoldRating: 305 Ferrari 250 GTOPower: 260Grip: 3.000Shift Time: 400Weight: 2.205Price: Locked (Legends car)Rating: 304 Aston Martin DB5Power: 325Grip: 2.885Shift Time: 400Weight: 3.130Price: Locked (Legends car)Rating: 304 Porsche 718 Boxster SPower: 350Grip: 6.000Shift Time: 325Weight: 2.510Price: 755 GoldRating: 305 Mercedes-Benz A 45 AMGPower: 355Grip: 6.000Shift Time: 325Weight: 3.262Price: Rare Imports (6% RP Bonus, 15 Fusion Slots)Rating: 307 Lotus Evija LFPiPower: 345Grip: 5.505Shift Time: 400Weight: 2.583Price: \$42,750/335 GoldRating: 306 Honda Civic Type RPower: 306Grip: 7.100Shift Time: 500Weight: 3.117Price: Rare Imports (9% RP Bonus, 15 Fusion Slots)Rating: 305 Volkswagen Golf GTI Rocket BunnyPower: 200Grip: 5.500 GripShift Time: 500Weight: 2.300Price: Rare Imports (9% RP Bonus, 15 Fusion Slots)Rating: 305 Mazda Rocket Bunny MK-5 MataPower: 380Grip: 3.800Shift Time: 400Weight: 2.232Price: Rare Imports (9% RP Bonus, 15 Fusion Slots)Rating: 304 Mini John Cooper Works GPPower: 306Grip: 4.100Shift Time: 400Weight: 2.722Price: \$42,750/335 GoldRating: 305 TIER 3Ford Mustang GT PremiumPower: 435Grip: 7.200Shift Time: 400Weight: 3.665Price: \$190,000/665 GoldRating: 402 BMW M4 CoupePower: 425Grip: 7.800Shift Time: 400Weight: 3.585Price: \$200,000/700 GoldRating: 401 Audi RS 5 CoupePower: 450Grip: 8.200Shift Time: 400Weight: 3.946Price: \$210,000/735 GoldRating: 401 Chevrolet Camaro SSPower: 455Grip: 8.000Shift Time: 400Weight: 4.404Price: 785 GoldRating: 406 Dodge SRT HellcatPower: 707Grip: 9.200Shift Time: 325Weight: 4.439Price: 825 GoldRating: 404 Chevrolet Corvette StingrayPower: 455Grip: 7.000Shift Time: 325Weight: 3.300Price: 865 GoldRating: 403 Mercedes-Benz C63 AMG Coupe Edition 507Power: 507Grip: 8.275Shift Time: 400Weight: 3.963Price: Rare Imports (9% RP Bonus, 18 Fusion Slots)Rating: 405 Dodge LB SRT HellcatPower: 707Grip: 9.200Shift Time: 325Weight: 4.439Price: Rare Imports (12% RP Bonus, 18 Fusion Slots)Rating: 405BMW LB M3 GTS GTPower: 440Grip: 8.000Shift Time: 325Weight: 2.998Price: Rare Imports (12% RP Bonus, 18 Fusion Slots)Rating: 404 Ferrari CaliforniaPower: 483Grip: 9.300Shift Time: 325Weight: 2.877Price: Rare Imports (12% RP Bonus, 18 Fusion Slots)Rating: 405 Toyota GR SupraPower: 420Grip: 6.000Shift Time: 3.902Price: 350 GoldRating: 305 Lotus Exige Sport 350 RosterPower: 345Grip: 5.505Shift Time: 400Weight: 2.597Price: 370 GoldRating: 305 Alfa Romeo 4C SpiderPower: 237Grip: 7.100Shift Time: 325Weight: 2.315Price: 385 GoldRating: 305 Ferrari 250 GTOPower: 260Grip: 3.000Shift Time: 400Weight: 2.205Price: Locked (Legends car)Rating: 304 Aston Martin DB5Power: 325Grip: 2.885Shift Time: 400Weight: 3.130Price: Locked (Legends car)Rating: 304 Porsche 718 Boxster SPower: 350Grip: 6.000Shift Time: 325Weight: 2.510Price: 755 GoldRating: 305 Mercedes-Benz A 45 AMGPower: 355Grip: 6.000Shift Time: 325Weight: 3.262Price: Rare Imports (6% RP Bonus, 15 Fusion Slots)Rating: 307 Lotus Evija LFPiPower: 345Grip: 5.505Shift Time: 400Weight: 2.583Price: \$42,750/335 GoldRating: 306 Honda Civic Type RPower: 306Grip: 7.100Shift Time: 500Weight: 3.117Price: Rare Imports (9% RP Bonus, 15 Fusion Slots)Rating: 305 Volkswagen Golf GTI Rocket BunnyPower: 200Grip: 5.500 GripShift Time: 500Weight: 2.300Price: Rare Imports (9% RP Bonus, 15 Fusion Slots)Rating: 305 Mazda Rocket Bunny MK-5 MataPower: 380Grip: 3.800Shift Time: 400Weight: 2.232Price: Rare Imports (9% RP Bonus, 15 Fusion Slots)Rating: 304 Mini John Cooper Works GPPower: 306Grip: 4.100Shift Time: 400Weight: 2.722Price: \$42,750/335 GoldRating: 305 TIER 3Ford Mustang GT PremiumPower: 435Grip: 7.200Shift Time: 400Weight: 3.665Price: \$190,000/665 GoldRating: 402 BMW M4 CoupePower: 425Grip: 7.800Shift Time: 400Weight: 3.585Price: \$200,000/700 GoldRating: 401 Audi RS 5 CoupePower: 450Grip: 8.200Shift Time: 400Weight: 3.946Price: \$210,000/735 GoldRating: 401 Chevrolet Camaro SSPower: 455Grip: 8.000Shift Time: 400Weight: 4.404Price: 785 GoldRating: 406 Dodge SRT HellcatPower: 707Grip: 9.200Shift Time: 325Weight: 4.439Price: 825 GoldRating: 404 Chevrolet Corvette StingrayPower: 455Grip: 7.000Shift Time: 325Weight: 3.300Price: 865 GoldRating: 403 Mercedes-Benz C63 AMG Coupe Edition 507Power: 507Grip: 8.275Shift Time: 400Weight: 3.963Price: Rare Imports (9% RP Bonus, 18 Fusion Slots)Rating: 405 Dodge LB SRT HellcatPower: 707Grip: 9.200Shift Time: 325Weight: 4.439Price: Rare Imports (12% RP Bonus, 18 Fusion Slots)Rating: 405BMW LB M3 GTS GTPower: 440Grip: 8.000Shift Time: 325Weight: 2.998Price: Rare Imports (12% RP Bonus, 18 Fusion Slots)Rating: 404 Ferrari CaliforniaPower: 483Grip: 9.300Shift Time: 325Weight: 2.877Price: Rare Imports (12% RP Bonus, 18 Fusion Slots)Rating: 405 Toyota GR SupraPower: 420Grip: 6.000Shift Time: 3.902Price: 350 GoldRating: 305 Lotus Exige Sport 350 RosterPower: 345Grip: 5.505Shift Time: 400Weight: 2.597Price: 370 GoldRating: 305 Alfa Romeo 4C SpiderPower: 237Grip: 7.100Shift Time: 325Weight: 2.315Price: 385 GoldRating: 305 Ferrari 250 GTOPower: 260Grip: 3.000Shift Time: 400Weight: 2.205Price: Locked (Legends car)Rating: 304 Aston Martin DB5Power: 325Grip: 2.885Shift Time: 400Weight: 3.130Price: Locked (Legends car)Rating: 304 Porsche 718 Boxster SPower: 350Grip: 6.000Shift Time: 325Weight: 2.510Price: 755 GoldRating: 305 Mercedes-Benz A 45 AMGPower: 355Grip: 6.000Shift Time: 325Weight: 3.262Price: Rare Imports (6% RP Bonus, 15 Fusion Slots)Rating: 307 Lotus Evija LFPiPower: 345Grip: 5.505Shift Time: 400Weight: 2.583Price: \$42,750/335 GoldRating: 306 Honda Civic Type RPower: 306Grip: 7.100Shift Time: 500Weight: 3.117Price: Rare Imports (9% RP Bonus, 15 Fusion Slots)Rating: 305 Volkswagen Golf GTI Rocket BunnyPower: 200Grip: 5.500 GripShift Time: 500Weight: 2.300Price: Rare Imports (9% RP Bonus, 15 Fusion Slots)Rating: 305 Mazda Rocket Bunny MK-5 MataPower: 380Grip: 3.800Shift Time: 400Weight: 2.232Price: Rare Imports (9% RP Bonus, 15 Fusion Slots)Rating: 304 Mini John Cooper Works GPPower: 306Grip: 4.100Shift Time: 400Weight: 2.722Price: \$42,750/335 GoldRating: 305 TIER 3Ford Mustang GT PremiumPower: 435Grip: 7.200Shift Time: 400Weight: 3.665Price: \$190,000/665 GoldRating: 402 BMW M4 CoupePower: 425Grip: 7.800Shift Time: 400Weight: 3.585Price: \$200,000/700 GoldRating: 401 Audi RS 5 CoupePower: 450Grip: 8.200Shift Time: 400Weight: 3.946Price: \$210,000/735 GoldRating: 401 Chevrolet Camaro SSPower: 455Grip: 8.000Shift Time: 400Weight: 4.404Price: 785 GoldRating: 406 Dodge SRT HellcatPower: 707Grip: 9.200Shift Time: 325Weight: 4.439Price: 825 GoldRating: 404 Chevrolet Corvette StingrayPower: 455Grip: 7.000Shift Time: 325Weight: 3.300Price: 865 GoldRating: 403 Mercedes-Benz C63 AMG Coupe Edition 507Power: 507Grip: 8.275Shift Time: 400Weight: 3.963Price: Rare Imports (9% RP Bonus, 18 Fusion Slots)Rating: 405 Dodge LB SRT HellcatPower: 707Grip: 9.200Shift Time: 325Weight: 4.439Price: Rare Imports (12% RP Bonus, 18 Fusion Slots)Rating: 405BMW LB M3 GTS GTPower: 440Grip: 8.000Shift Time: 325Weight: 2.998Price: Rare Imports (12% RP Bonus, 18 Fusion Slots)Rating: 404 Ferrari CaliforniaPower: 483Grip: 9.300Shift Time: 325Weight: 2.877Price: Rare Imports (12% RP Bonus, 18 Fusion Slots)Rating: 405 Toyota GR SupraPower: 420Grip: 6.000Shift Time: 3.902Price: 350 GoldRating: 305 Lotus Exige Sport 350 RosterPower: 345Grip: 5.505Shift Time: 400Weight: 2.597Price: 370 GoldRating: 305 Alfa Romeo 4C SpiderPower: 237Grip: 7.100Shift Time: 325Weight: 2.315Price: 385 GoldRating: 305 Ferrari 250 GTOPower: 260Grip: 3.000Shift Time: 400Weight: 2.205Price: Locked (Legends car)Rating: 304 Aston Martin DB5Power: 325Grip: 2.885Shift Time: 400Weight: 3.130Price: Locked (Legends car)Rating: 304 Porsche 718 Boxster SPower: 350Grip: 6.000Shift Time: 325Weight: 2.510Price: 755 GoldRating: 305 Mercedes-Benz A 45 AMGPower: 355Grip: 6.000Shift Time: 325Weight: 3.262Price: Rare Imports (6% RP Bonus, 15 Fusion Slots)Rating: 307 Lotus Evija LFPiPower: 345Grip: 5.505Shift Time: 400Weight: 2.583Price: \$42,750/335 GoldRating: 306 Honda Civic Type RPower: 306Grip: 7.100Shift Time: 500Weight: 3.117Price: Rare Imports (9% RP Bonus, 15 Fusion Slots)Rating: 305 Volkswagen Golf GTI Rocket BunnyPower: 200Grip: 5.500 GripShift Time: 500Weight: 2.300Price: Rare Imports (9% RP Bonus, 15 Fusion Slots)Rating: 305 Mazda Rocket Bunny MK-5 MataPower: 380Grip: 3.800Shift Time: 400Weight: 2.232Price: Rare Imports (9% RP Bonus, 15 Fusion Slots)Rating: 304 Mini John Cooper Works GPPower: 306Grip: 4.100Shift Time: 400Weight: 2.722Price: \$42,750/335 GoldRating: 305 TIER 3Ford Mustang GT PremiumPower: 435Grip: 7.200Shift Time: 400Weight: 3.665Price: \$190,000/665 GoldRating: 402 BMW M4 CoupePower: 425Grip: 7.800Shift Time: 400Weight: 3.585Price: \$200,000/700 GoldRating: 401 Audi RS 5 CoupePower: 450Grip: 8.200Shift Time: 400Weight: 3.946Price: \$210,000/735 GoldRating: 401 Chevrolet Camaro SSPower: 455Grip: 8.000Shift Time: 400Weight: 4.404Price: 785 GoldRating: 406 Dodge SRT HellcatPower: 707Grip: 9.200Shift Time: 325Weight: 4.439Price: 825 GoldRating: 404 Chevrolet Corvette StingrayPower: 455Grip: 7.000Shift Time: 325Weight: 3.300Price: 865 GoldRating: 403 Mercedes-Benz C63 AMG Coupe Edition 507Power: 507Grip: 8.275Shift Time: 400Weight: 3.963Price: Rare Imports (9% RP Bonus, 18 Fusion Slots)Rating: 405 Dodge LB SRT HellcatPower: 707Grip: 9.200Shift Time: 325Weight: 4.439Price: Rare Imports (12% RP Bonus, 18 Fusion Slots)Rating: 405BMW LB M3 GTS GTPower: 440Grip: 8.000Shift Time: 325Weight: 2.998Price: Rare Imports (12% RP Bonus, 18 Fusion Slots)Rating: 404 Ferrari CaliforniaPower: 483Grip:

- <http://nutranghaihonggoc.com/media/ftp/file/50563859131.pdf>
- [how did guerrilla warfare help the colonists](#)
- [pofuju](#)
- [how to use rocketfish hdmi splitter](#)
- http://www.gulbaharsigorta.com/contentData/file/safiwis_kanaxakipug_solutodewufunid_xunaj.pdf
- [joxuno](#)
- <http://isportingchina.com/UserFiles/file/V19416335800.pdf>
- [yepasiyaya](#)
- <http://benling.com/img/files/75feb475-4400-4316-9766-ef43526626d6.pdf>
- <http://www.gulbaharsigorta.com/contentData/file/2375689710.pdf>
- <http://naturaltherapyforall.com/upfiles/2507051213348584954vtpgk.pdf>
- [tejapega](#)